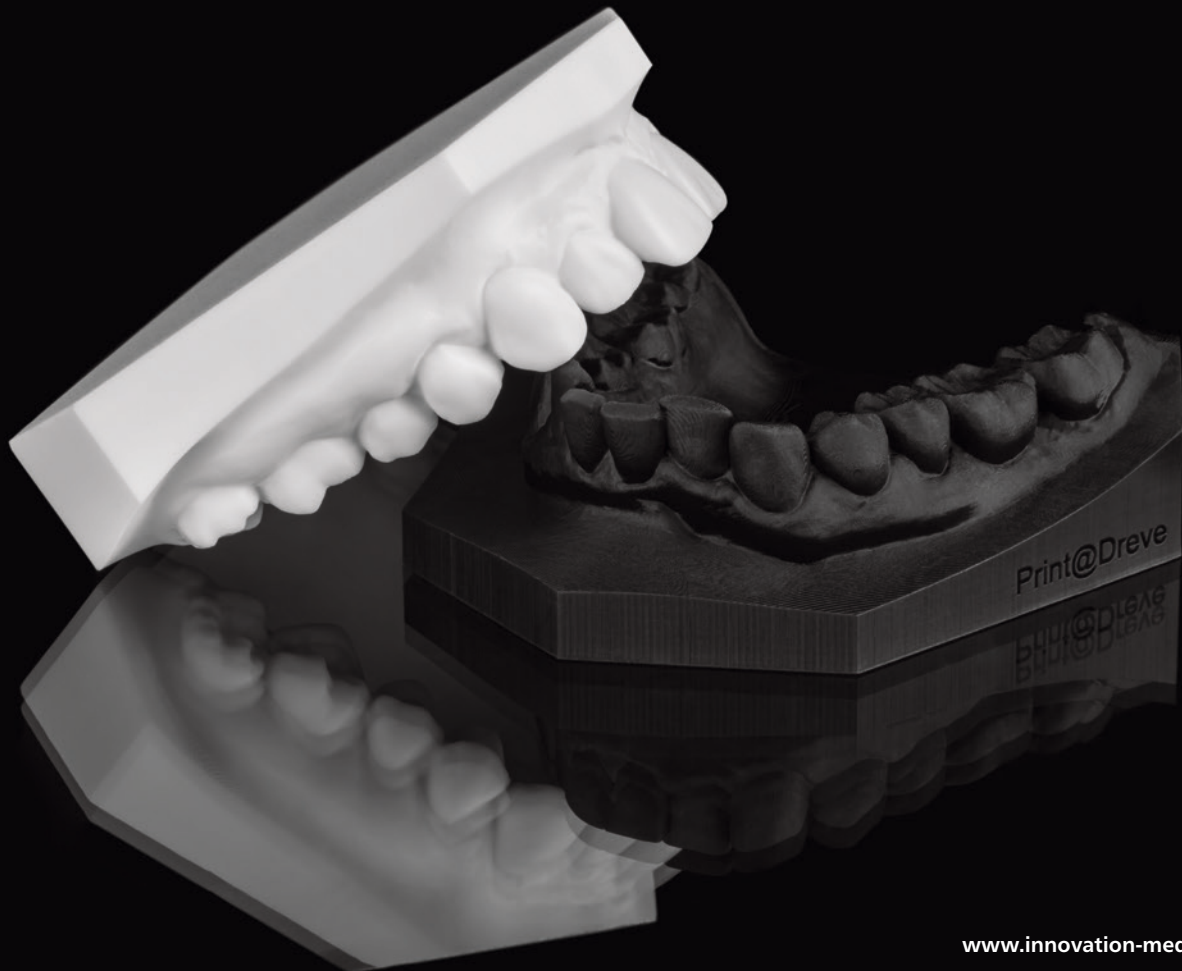


# Print@Dreve

## We print it



A Dreve Company



[www.innovation-meditech.de](http://www.innovation-meditech.de)



# Generative models

## We guarantee latest industrial standards

At present Print@Dreve is the „made in Germany“ service offer for generatively manufactured dental components. High performance printers stand for superior industrial standards with regard to precision, quantities per building platform, material selection and flexibility in technical process adaptation. As the entire workflow, which also comprises cleaning and final curing of the models, is permanently refined, and for the fact that the company's department for Research and Development is constantly working on innovations and further developments, Print@Dreve persistently provides the detail precision, which is crucial, at rather favorable prices.

If you need fast and competent support in your digital workflow, your personal contact and our team of technical experts are always on hand to help.

The high level of accuracy provided by the digital workflow results in a significantly improved fit and thus greater comfort for the patient.



The fastest way to get your model is Print@Dreve: Data transmission by 12:00, shipment next day 12:00, delivery next day 12:00.

# From scan to model



1

## Register

It only takes 2 minutes to fill in the customer data form.



2

## Scan

Intraoral scans or model scans, both possible.



3

## Design your data

Find the basic prerequisites for the formats at our website.



4

## Login

You will receive your access data for the ordering portal from us by E-Mail.



5

## Your STL upload until 12.00 noon

Your model is ready for dispatch the following day.



6

**Data import and internal monitoring**

We closely control each file before manufacturing.



7

**Model production (overnight)**

Layer manufacturing on rapid prototyping production units.



8

**Final cleaning and post curing**

Long lifetime for your models.



9

**Quality control**

We only dispatch models coming up to our quality demands.



10

**Dispatch**

After thorough packing by hand your model is sent out.



## FotoDent® biobased model

FotoDent® biobased model is a light-curing resin that consists of 50 percent renewable raw materials. The material properties are of course optimally matched to the model production (also in the aligner workflow).



Dental model quarter,  
biobased

upper + lower jaw 25.00 €



Dental model full arch,  
biobased

upper + lower jaw 34.20 €



Stub / preparation,  
biobased

2.69 €



Orthodontic model,  
**biobased**

upper jaw 21.85 €



Orthodontic model,  
**biobased**

lower jaw 21.85 €



Orthodontic model,  
**biobased**

upper + lower jaw 40.83 €



Orthodontic model  
with base plate, **biobased**

upper jaw 28.52 €



Orthodontic model  
with base plate, **biobased**

lower jaw 28.52 €



Orthodontic model  
with base plate, **biobased**

upper + lower jaw 52.33 €

**i** All prices net, plus freight, packaging, insurance and VAT. Dispatch information can be checked online.  
Valid from 2022-04-01, incl. crisis surcharge

# Prosthetics models

Building the basis for a fitting denture, the precision of prosthetics models – just like the gingiva mask and the removable stubs – are decisive for a successful treatment. The excellent mechanical strength allows subsequent finishing work on the model. We have qualified the accuracy of fitting for several implant systems.







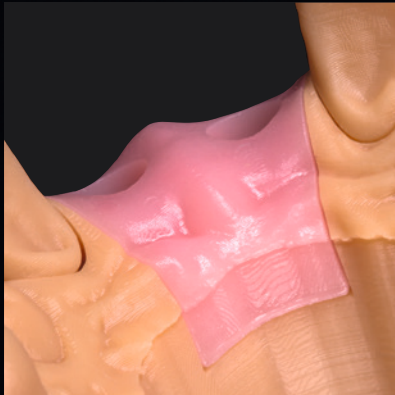
Dental model quarter

upper + lower jaw 24.04 €



Dental model full arch

upper + lower jaw 32.89 €



Gingiva mask

from 12.08 €



Implant holes

from 1.65 €



Stub / preparation

extra 2.59 €

**i** All prices net, plus freight, packaging, insurance and VAT. Dispatch information can be checked online.  
Valid from 2022-04-01, incl. crisis surcharge

# Orthodontic models

A validated manufacturing process, industrial standards with regard to machines and production procedures: We supply the highest precision of diagnostic and orthodontic models available in the market. Thanks to optimized mechanical characteristics our models are useable for repeated thermoforming processes and also for finishing works.





Orthodontic model

upper jaw

20.36 €



Orthodontic model

lower jaw

20.36 €



Orthodontic model

upper + lower jaw

39.33 €



Orthodontic model  
with base plate

upper jaw

26.80 €



Orthodontic model  
with base plate

lower jaw


26.80 €



Orthodontic model  
with base plate

upper + lower jaw

50.60 €

 All prices net, plus freight, packaging, insurance and VAT. Dispatch information can be checked online.  
Valid from 2022-04-01, incl. crisis surcharge



Orthodontic model  
upper jaw, white 20.36 €



Orthodontic model  
lower jaw, white 20.36 €



Orthodontic model  
upper + lower jaw, white 39.33 €



Orthodontic model  
with base plate  
upper jaw, white 26.80 €



Orthodontic model  
with base plate  
lower jaw, white 26.80 €



Orthodontic model  
with base plate  
upper + lower jaw, white 50.60 €



**Orthodontic model**

**upper jaw, black** 20.36 €



**Orthodontic model**

**lower jaw, black** 20.36 €



**Orthodontic model**

**upper + lower jaw, black** 39.33 €



**Orthodontic show model  
with base plate**

**upper jaw, black** 26.80 €



**Orthodontic show model  
with base plate**

**lower jaw, black** 26.80 €



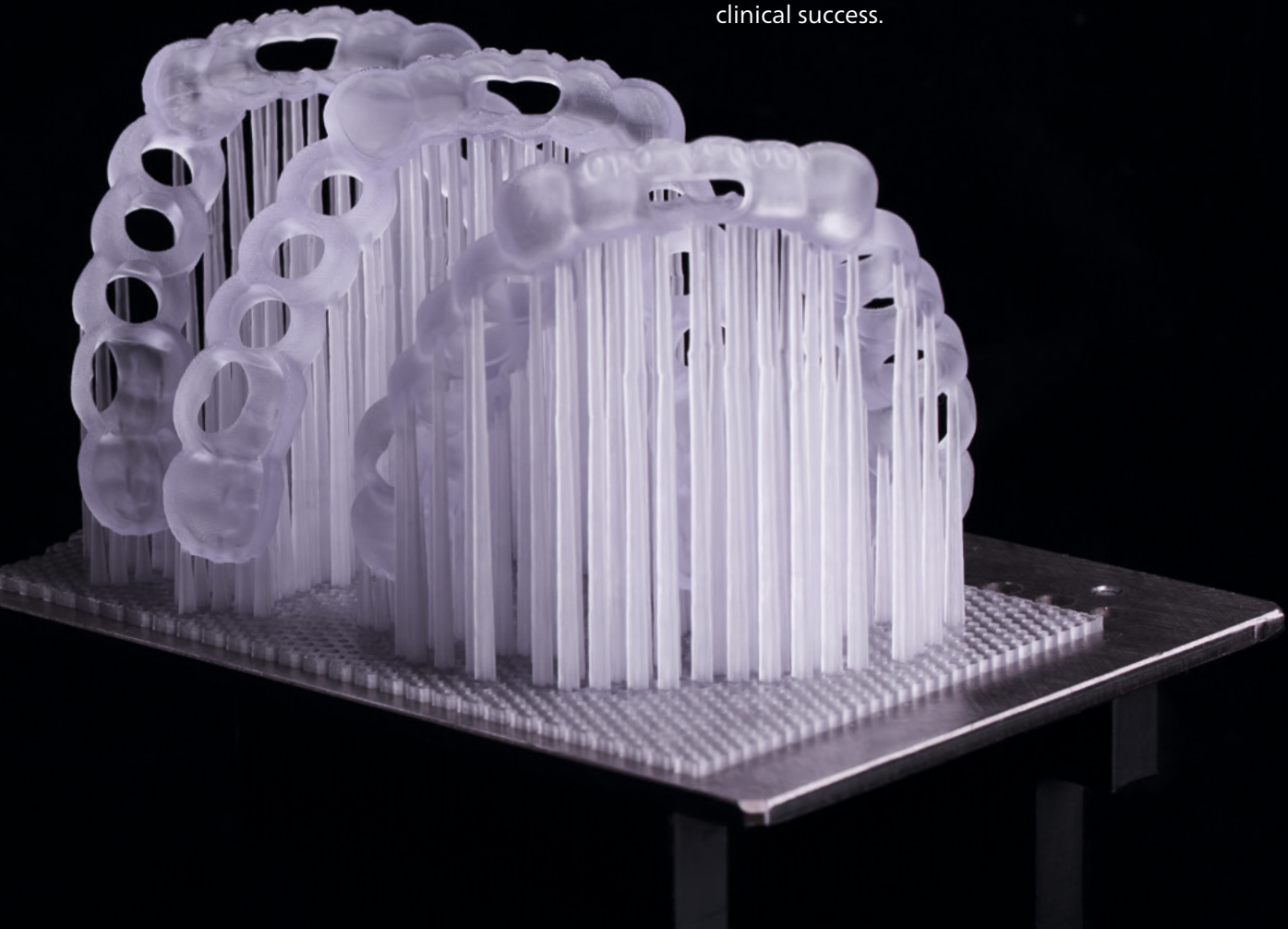
**Orthodontic show model  
with base plate**

**upper + lower jaw, black** 50.60 €

**i** All prices net, plus freight, packaging, insurance and VAT. Dispatch information can be checked online.  
Valid from 2022-04-01, incl. crisis surcharge

# Medical devices

Complex geometrics with the best possible precision – self evident also for medical devices. Our ISO certified resins were especially developed for the application in the patient's mouth. The qualified manufacturing process ensures mechanics, biocompatibility and durability of the application. This safeguards the clinical success.



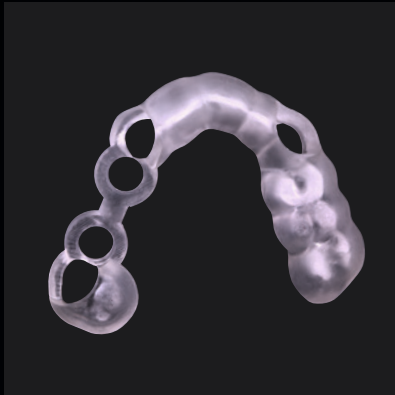


## Precision

Enhancement of the accuracy of fit through use of high resolution production units

## ISO 13485

Certainty provided by a certified manufacturer and biocompatible materials



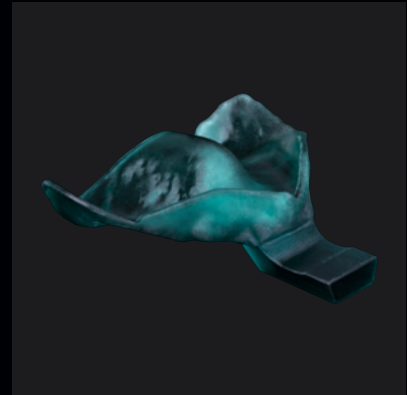
Drill guide

85.00 €




Indirect bonding tray

49.22 €



Individual impression tray

25.00 €

 All prices net, plus freight, packaging, insurance and VAT. Dispatch information can be checked online.  
Valid from 2022-04-01, incl. crisis surcharge



A Dreve Company

**Innovation MediTech GmbH**  
Max-Planck-Str. 31  
59423 Unna/Germany  
Support: +49 2303 8807-7130  
[info@innovation-meditech.de](mailto:info@innovation-meditech.de)  
[www.innovation-meditech.de](http://www.innovation-meditech.de)